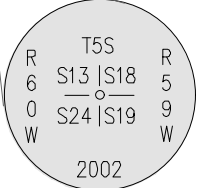


EXHIBIT

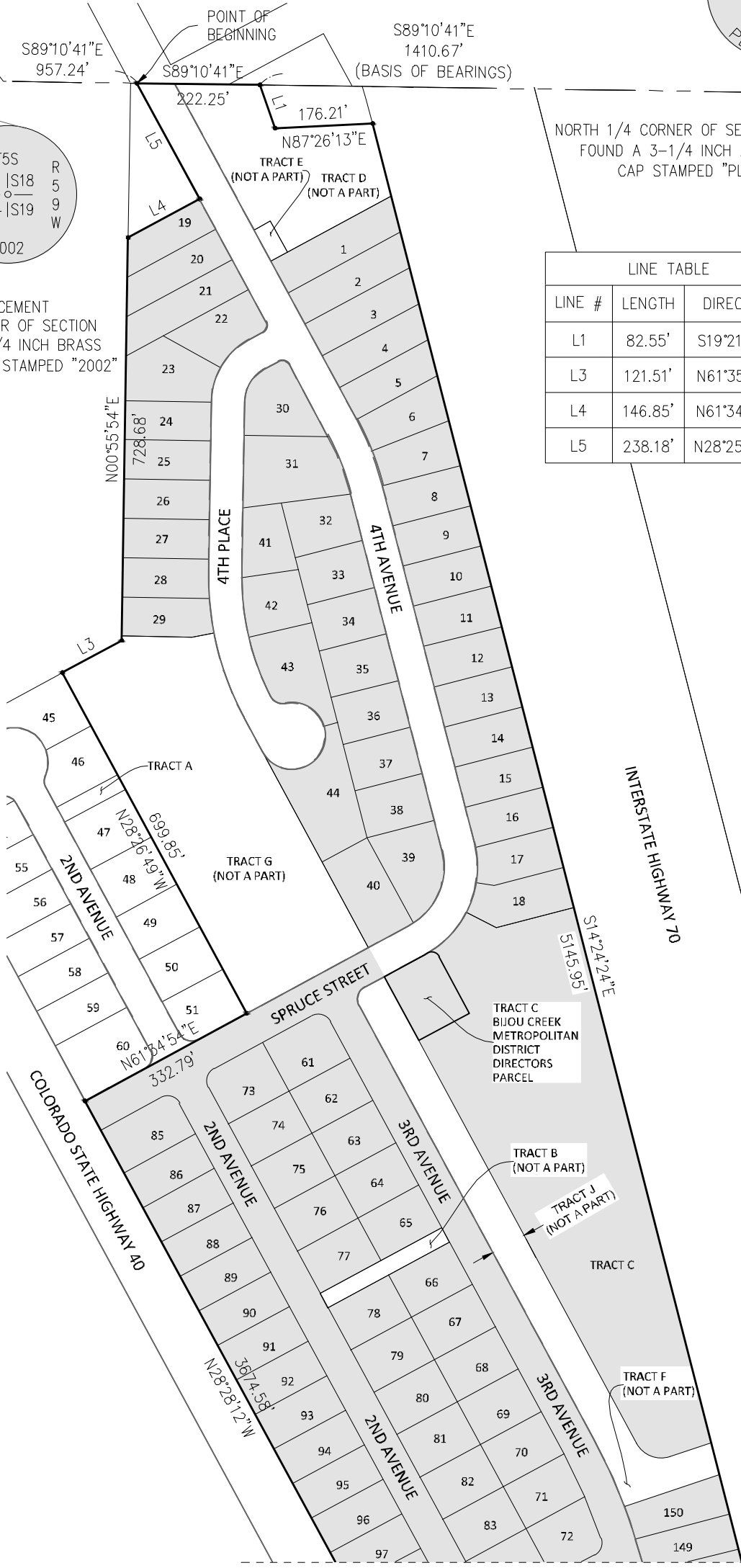
BIJOU CREEK METROPOLITAN DISTRICT BOUNDARIES (PHASES IB, II, & III)



POINT OF COMMENCEMENT
NORTHWEST CORNER OF SECTION
19, FOUND A 3-1/4 INCH BRASS
CAP IN CONCRETE STAMPED "2002"

NORTH 1/4 CORNER OF SECTION 19,
FOUND A 3-1/4 INCH ALUMINUM
CAP STAMPED "PLS 30127"

LINE TABLE		
LINE #	LENGTH	DIRECTION
L1	82.55'	S19°21'43"E
L3	121.51'	N61°35'12"E
L4	146.85'	N61°34'54"E
L5	238.18'	N28°25'06"W



MATCH SHEET 2



N.T.S.

EXHIBIT

BY: DM CHK: SC SCALE: 1"=250'

BCG PROJECT NO: 020351



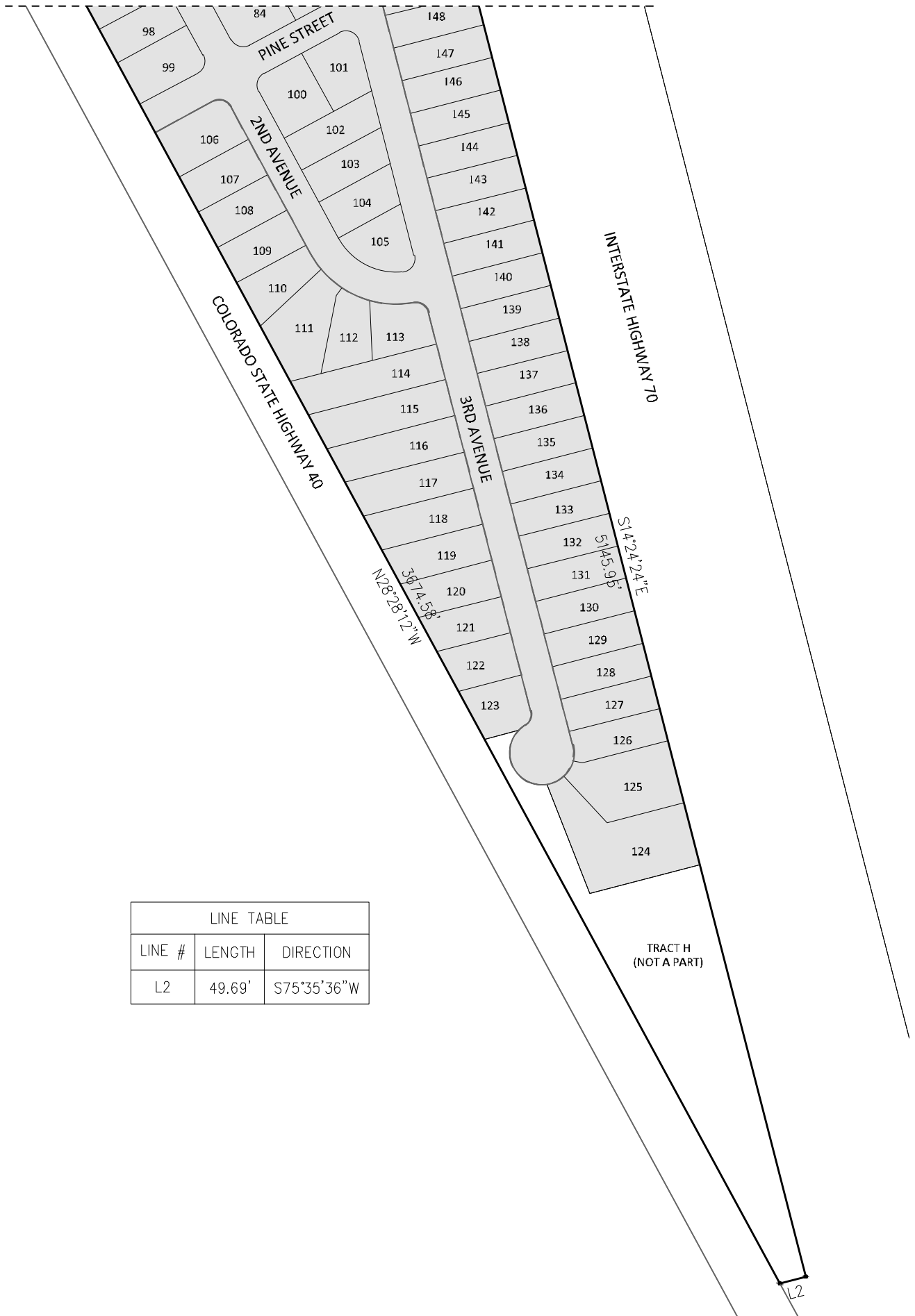
1526 Cole Blvd, Suite 100
Lakewood, CO 80401
Phone: (303) 801-2900
www.bowmanconsulting.com

DATE: 7/08/2020
SHEET 1 OF 2

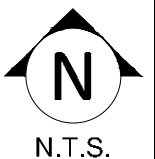
EXHIBIT

BIJOU CREEK METROPOLITAN DISTRICT BOUNDARIES (PHASES IB, II, & III)

MATCH SHEET 1



LINE TABLE		
LINE #	LENGTH	DIRECTION
L2	49.69'	S75°35'36"W



EXHIBIT

BY: DM CHK: SC SCALE: 1"=250'

BCG PROJECT NO: 020351



1526 Cole Blvd, Suite 100
Lakewood, CO 80401
Phone: (303) 801-2900
www.bowmanconsulting.com